

MAX PLATE 244.0

PLATE 236.0

THIRD FLOOR

SECOND FLOOR

FIRST FLOOR 204.0



COMPOSITION SHINGLE ROOFING

FASCIA AND TRIM, BENJAMIN MOORE "DRAGON'S BREATH" #1547

VERTICAL CLEAR FINISHED CEDAR SIDING

HORIZONTAL CLEAR FINISHED CEDAR SIDING

RESIDENTIAL VINYL WINDOWS, COLOR TAN

8" HARDI LAP SIDING, PAINTED, BENJAMIN MOORE "ANNAPOLIS GRAY" #E-70

METAL CAP

PAINTED METAL RAILING, BENJAMIN MOORE "DRAGON'S BREATH" #1547

PAINTED METAL CANOPY (UNDER SEPARATE PERMIT), BENJAMIN MOORE "DRAGON'S BREATH" #1547

HARDI PANEL SIDING, BENJAMIN MOORE "IRON GATE" #1545

CAST CONCRETE CAP

BRICK VENEER

WEST ELEVATION BUILDING 1

SCALE: 1/4"=1'-0"

4422 MERIDIAN AVE. N.  
CLASSIC CITY HOMES  
MARCH 22, 2010



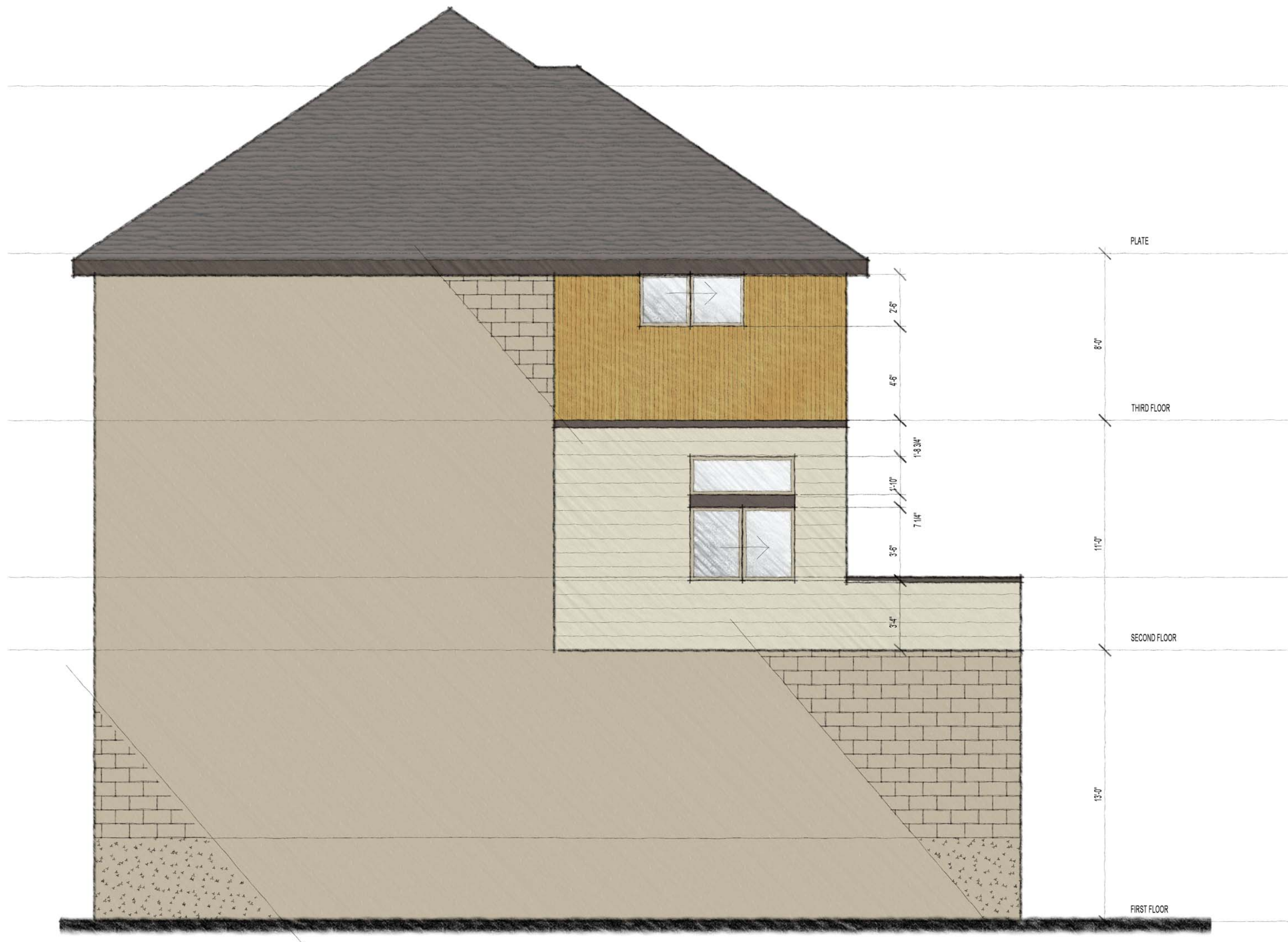
**SOUTH ELEVATION BUILDING 1**  
 SCALE: 1/4"=1'-0"

**4422 MERIDIAN AVE. N.**  
 CLASSIC CITY HOMES  
 MARCH 22, 2010



EAST ELEVATION BUILDING 1  
SCALE: 1/4"=1'-0"

4422 MERIDIAN AVE. N.  
CLASSIC CITY HOMES  
MARCH 22, 2010



**NORTH ELEVATION BUILDING 1**  
 SCALE: 1/4"=1'-0"

**4422 MERIDIAN AVE. N.**  
 CLASSIC CITY HOMES  
 MARCH 22, 2010